

Stainless Steel HYGIENIC GLANDS for Industrial Applications



Hygienic Glands
Hygienic Glands, EMC

86 - 87
88 - 89

Stainless Steel Liquidtight HYGIENIC CONDUIT FITTINGS for Industrial Applications






Hygienic Fittings
Further Accessories
Applications

90 - 91
92
93

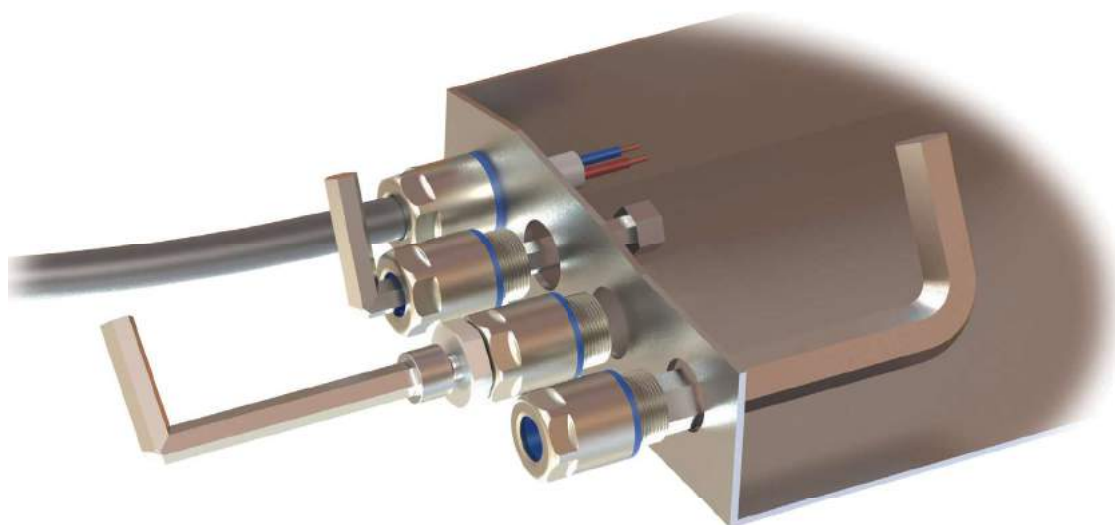
Hygienic Cable Glands Stainless Steel

Cable glands for hygienic requirements

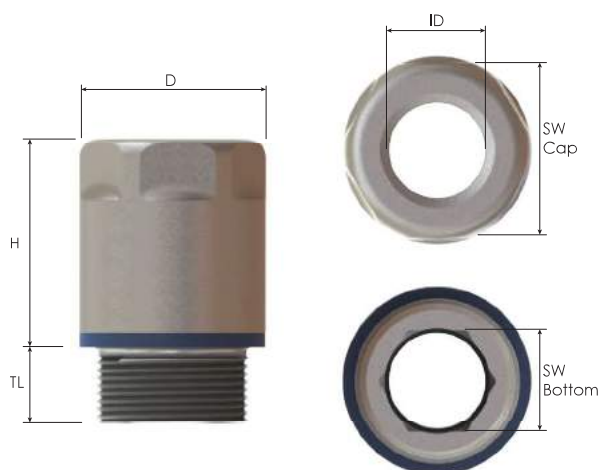
- For applications in manufacturing and packaging of food and pharmaceuticals, clean room technology, biotechnology, chemical industry.
- Smooth finish prevents harmful micro organisms to stick to the surface.
- No threads are exposed.
- Gasket material according to FDA guideline 21 CFR 177.2600.
- Cleaning of cable glands is easier, faster and less expensive.
- Reliable strain relief due to strain relief element separated from grommet.
- Suitable for high pressure steam cleaning.
- Lock nut included.

Technical Details		
	Body, Cap	Stainless steel 1.4305 (AISI 303)
Material	Clamp, Insert	POM
	Seal	TPE
Ingress Protection Rating	IP 68 - 5 Bar, 30 min	
	IP 69	
Operating Temperature	Permanent	Intermittent
	-20 °C to +100 °C	-40 °C to +150 °C
Cable Type	Non armoured	
Thread Type	• Metric EN 60423	
	• Other thread types also available upon request.	
Accessories	• Lock nuts	
	• Dome plugs	
Remarks	• Assembling tools	
	• Manufactured according to DIN EN 62444/50262.	
	• We recommend the use of lock nuts to ensure IP rating for rough surfaces or through holes.	
	• Accessories must be ordered separately.	
	• Some approvals do not cover all sizes.	
	Note: Applications of most cable glands don't require same parameters applied to tests. For applications strictly acc. to the approval definitions please consult data sheet.	
Approvals	Certificate Number	Standards
	4001820	DIN EN 62444
	485TUM2016 No.15/2015	EHEDG-Doc. 2, 3rd edition, 2004,
	E-14047	EN62444

For more approvals: see our webpage.



Hygienic Cable Glands Stainless Steel



Thread Type **METRIC** acc. to EN 60423

Outer Thread Size (Male)	Clamping Range	Outer Thread Length	Spanner Width		Outer Ø	Inner Ø	max. Height	Part Number	Minimum Order Quantity
			Cap	Bottom					
	Ø min-max mm	TL mm	SW Cap mm	SW Bottom mm	D mm	ID mm	H mm		
M12x1,5	3,0 - 6,5	6,0	14	7	15,6	6,7	22,0	BMFG-0S	250
M16x1,5	5,0 - 10,0	7,0	18	10	20,2	10,3	23,5	BMFG-01S	250
M20x1,5	6,0 - 12,0	10,0	22	13	24,1	12,3	27,0	BMFG-02S	250
M25x1,5	12,0 - 17,0	14,0	28	17	30,1	17,3	29,5	BMFG-03S	250

Hygienic Cable Gland Tightening Tool

Technical Details

Material Stainless Steel 1.4305 (AISI 303)



Tightening Tool

For Gland Size	Allen Screw SW a	Spanner Width SW b	Height h	Part Number	Minimum Order Quantity
M12	5,0	7	5,0	BMFGT-01	250
M16	6,0	10	5,0	BMFGT-02	250
M20	8,0	13	8,0	BMFGT-03	250
M25	10,0	17	8,0	BMFGT-04	250



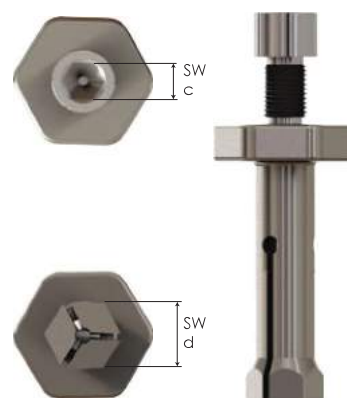
Hygienic Cable Gland Special Tool

Technical Details

Material Stainless Steel 1.4305 (AISI 303)

Special Tool




For Gland Size	Spanner Width		Part Number	Minimum Order Quantity
	SW c	SW d min-max		
	mm	mm		
M16	6,0	9,0 - 10,0	BMFGST-02	250
M20	8,0	11,0 - 13,0	BMFGST-03	250
M25	10,0	15,0 - 17,0	BMFGST-04	250



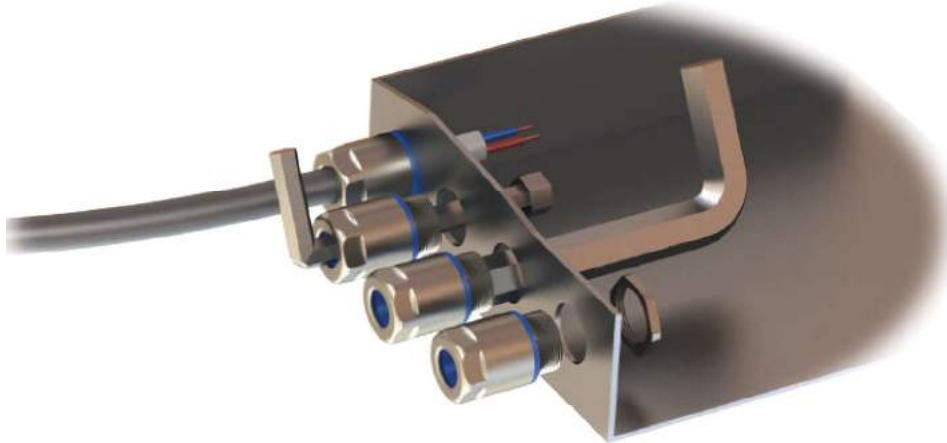
Hygienic Cable Glands, EMC Stainless Steel

EMC cable glands for hygienic requirements

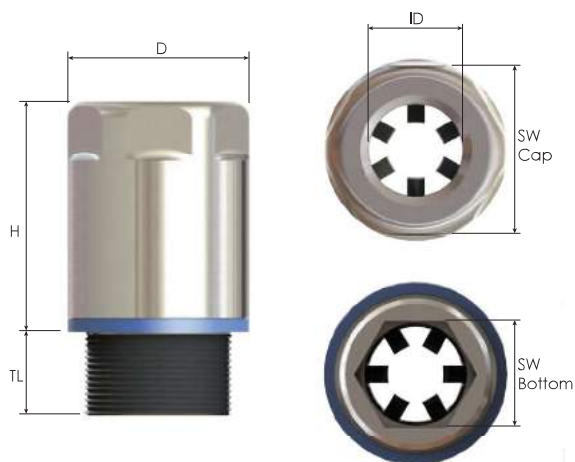
- For EMC applications in manufacturing and packaging of food and pharmaceuticals, clean room technology, biotechnology, chemical industry.
- Long-lasting contact by high definition contact spring.
- Moving spring contact offers reduced risk of sheath damage.
- Smooth finish prevents harmful micro organisms to adhere on the surface.
- No threads are exposed.
- Gasket material according to FDA guideline 21 CFR 177.2600.
- Cleaning of cable glands is easier, faster and less expensive.
- Reliable strain relief due to strain relief element separated from grommet.
- Suitable for high pressure steam cleaning.
- EMC lock nut included.
- Assembling tool included.

Technical Details		
Material	Body, Cap	Stainless steel 1.4305 (AISI 303)
	Clamp, Insert	POM
	Contact Spring	Special Copper Alloy
	Seal	TPE
Ingress Protection Rating	IP 68 - 5 Bar, 30 min	
	IP 69	
Operating Temperature	Permanent	Intermittent
	-20 °C to +100 °C	-40 °C to +150 °C
Cable Type	Shielded	
Thread Type	<ul style="list-style-type: none"> • Metric EN 60423 • Other thread types also available upon request. 	
Accessories	<ul style="list-style-type: none"> • Lock nuts • Dome plugs • Assembling tools 	
Remarks	<ul style="list-style-type: none"> • Manufactured according to DIN EN 62444/50262. • We recommend the use of lock nuts to ensure IP rating for rough surfaces or through holes. • Accessories must be ordered separately. • Some approvals do not cover all sizes. <p>Note: Applications of most cable glands don't require same parameters applied to tests. For applications strictly acc. to the approval definitions please consult data sheet.</p> <p>Note: When using special tool – do not damage contact springs.</p>	
Approvals	Certificate Number	Standards
	4001820	DIN EN 62444
	485TUM2016 No.15/2015	EHEDG-Doc. 2, 3rd edition, 2004,
	E-14047	EN62444

For more approvals: see our webpage.



Hygienic Cable Glands, EMC Stainless Steel



Thread Type **METRIC** acc. to EN 60423

Outer Thread Size (Male)	Clamping Range	Shield Ø	Outer Thread Length	Spanner Width		Outer Ø	Inner Ø	max. Height	Part Number	Minimum Order Quantity
	Ø min-max mm	Ø min-max mm	TL mm	SW Cap mm	SW Bottom mm	D mm	ID mm	H mm		
M16x1,5	5,0 - 10,0	4,0 - 9,0	7,0	18	10	20,2	10,3	29,0	BMEFG-01	250
M20x1,5	6,0 - 12,0	5,0 - 11,0	10,0	22	13	24,1	12,3	33,5	BMEFG-02	250
M25x1,5	12,0 - 17,0	10,0 - 16,0	14,0	28	17	30,1	17,3	39,0	BMEFG-03	250

Hygienic Cable Gland Tightening Tool

Technical Details

Material Stainless Steel 1.4305 (AISI 303)

Tightening Tool

For Gland Size	Allen Screw SW a mm	Outer Spanner Width SW b mm	Height h mm	Part Number	Minimum Order Quantity
M16	6,0	10	5,0	BMFGT-02	250
M20	8,0	13	8,0	BMFGT-03	250
M25	10,0	17	8,0	BMFGT-04	250

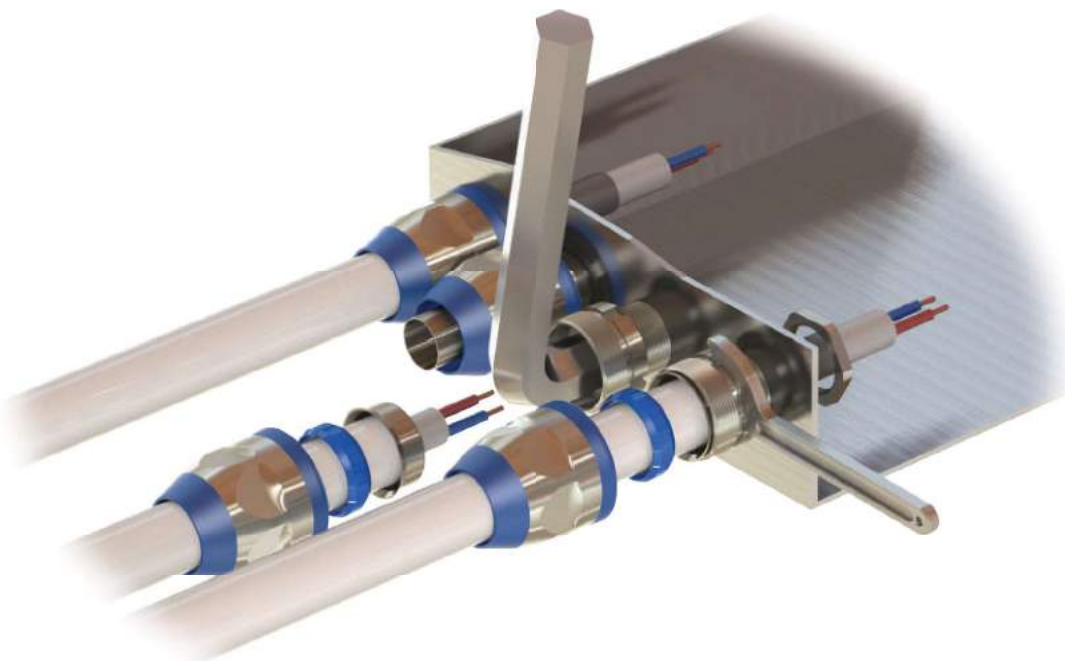


Hygienic Conduit Fittings Stainless Steel

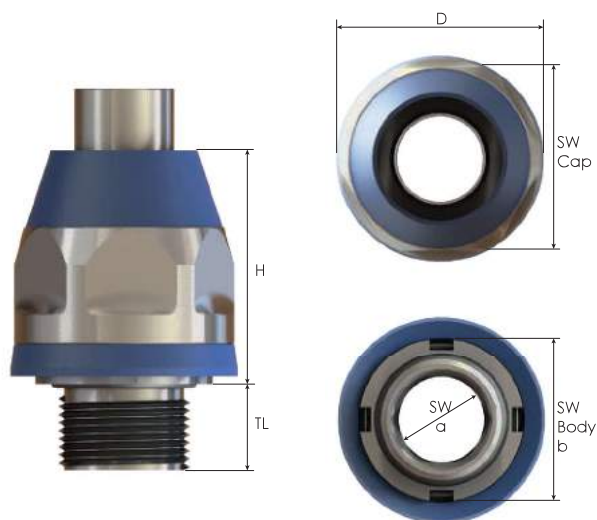
Stainless steel Hygienic Conduit Fittings

- Stainless steel Hygienic Conduit Fittings are used in all areas where cleanliness is a necessity. Avoiding build-up of dirt is most important in the following industries:
- Manufacturing and packaging of food and pharmaceuticals
- Clean room technology
- Biotechnology
- Chemical industry
- Smooth finish prevents harmful micro organisms to adhere to the surface no threads are exposed,
- Cleaning of fittings is easier, faster and less expensive compared to traditional stainless steel cable glands,
- Upper protective cap avoids dirt to enter the system
- Suitable for high pressure steam cleaning

Technical Details		
Material	Body, Cap	Stainless steel 1.4404 (AISI 316L)
	Seal	TPE, according to FDA guideline 21 CFR 177.2600
	Pressure Ring	PA6 (Polyamide 6)
	O-ring	NBR
	Ferrule	Brass Nickel plated
	Ingress Protection Rating	IP 68 (5 bar, 30 min), according to EN 60 529 IP 69K, according to DIN 40050-9
Operating Temperature	Permanent	-20 °C to +100 °C
	Intermittent	-40 °C to +150 °C
Thread Type	Metric, according to EN 60423 PG and NPT upon request	
Accessories	<ul style="list-style-type: none"> • Lock nuts 	
Remarks	<ul style="list-style-type: none"> • Accessories must be ordered separately. • O-ring available in Metric threads. • Smooth finish prevents harmful micro organisms to adhere to the surface. • No threads are exposed. • Cleaning of fittings is easier, faster and less expensive compared to traditional stainless steel cable glands. • Suitable for high pressure steam cleaning. • Manufacturing and packaging of food and pharmaceuticals. • Clean room technology, Biotechnology, Chemical industry... 	



Hygienic Conduit Fittings Stainless Steel



Thread Type **METRIC** acc. to EN 60423

Outer Thread Size (Male)	For Sealtite Nominal Size	Outer Thread Length	Spanner Width			Outer Ø	max. Height	Part Number	Minimum Order Quantity
			Cap	Allen Screw	Crescent Wrench				
			TL mm	SW Cap mm	SW a mm				
M16x1,5	3/8"	11,5	27	11	24	31,1	39,0	BMHF-01	400
M20x1,5	1/2"	13,0	30	14	27	34,0	39,5	BMHF-02	400
M25x1,5	3/4"	15,0	36	19	33	41,0	44,5	BMHF-03	200
M32x1,5	1"	15,0	46	25	42	52,7	55,0	BMHF-04	100
M40x1,5	1 1/4"	16,0	54	32	50	62,0	61,0	BMHF-05	60
M50x1,5	1 1/2"	18,0	63	36	58	70,0	65,5	BMHF-06	40
M63x1,5	2"	20,0	77	48	72	84,6	70,5	BMHF-07	20

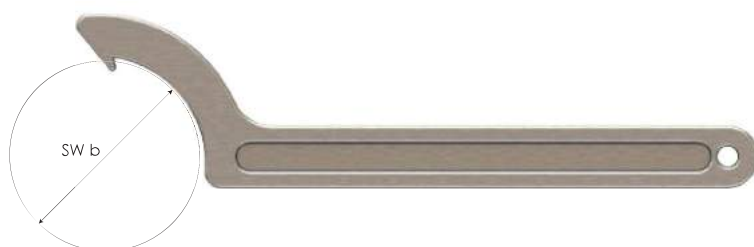
Hygienic Conduit Fitting Tightening Tool

Technical Details

Material Metal

Tightening Tool

For Gland Size	Allen Screw SW a	Spanner Ø SW b
	mm	mm
M16	11,0	24,0
M20	14,0	27,0
M25	19,0	33,0
M32	25,0	42,0
M40	32,0	50,0
M50	36,0	58,0
M63	48,0	72,0



Further Accessories for Hygienic Glands & Fittings

Lock Nuts

Stainless Steel Lock Nuts



68

Stainless Steel EMC Lock Nuts



69

Food , Beverage and Pharmaceuticals Processing Machinery



Packaging for food, Beverage and Pharmaceuticals



Stainless Steel Control Cabinets and Monitoring Systems



Stainless Steel Control Enclosures for Food and Pharmaceuticals



Plastic RIGID CONDUIT FITTINGS for Industrial Applications



Straight Fittings	96
Enclosure Couplers	97
Flexible Fittings	98
Straight Couplers	99
Conduit Union	100
Bend Couplers	101



Metal

LIQUID TIGHT CONDUIT FITTINGS for Industrial Applications



Liquid Tight Conduit Fittings Straight, Male	102 - 103
Liquid Tight Conduit Fittings 45°, Male	104 - 105
Liquid Tight Conduit Fittings 90°, Male	106 - 107
Liquid Tight Conduit Fittings Straight, Female	108 - 109
Liquid Tight Conduit Fittings Straight, Cable Hose, Male	110 - 111
Straight Swivel Fittings	112
Applications	113

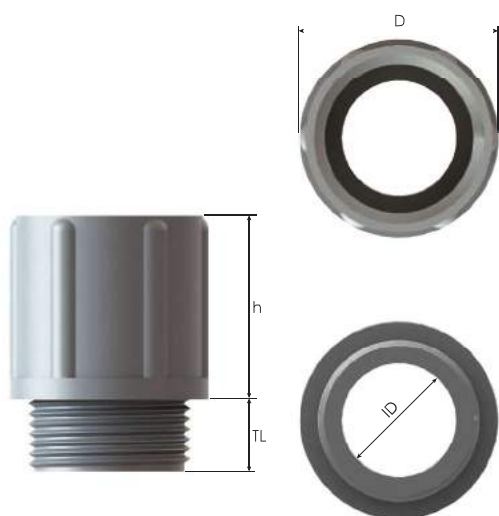


Straight Conduit Fittings Polyamide

Straight Conduit Fittings, Polyamide

- Halogen free.
- No toxic fumes when involved in a fire.
- For flexible spiral conduits.
- One side with standard metric or PG thread and special thread for conduit spiral on the other side.

Technical Details	
Material	Polyamide 6 Halogene free
Ingress Protection Rating	IP 54
Operating Temperature	Permanent -20 °C to +80 °C
Thread Type	Metric, according to EN 60423 PG, according to DIN 40430
Accessories	• Lock nuts
Remarks	• We recommend the use of lock nuts to ensure IP rating for rough surfaces or through holes. • Accessories must be ordered separately.



Thread Type **METRIC** acc. to EN 60423

Outer Thread Size (Male)	For Conduit Nominal Size	Outer Thread Length TL mm	Outer Ø D mm	Inner Ø ID mm	Height h mm	Part Number	Minimum Order Quantity
						RAL 7035 light grey	
M12x1,5	12,8	8,0	17,4	7,0	21,2	BCM-05	3000
M16x1,5	15,0	8,0	20,0	10,0	21,3	BCM-01	2000
M20x1,5	19,0	8,0	24,1	15,0	24,5	BCM-02	2000
M25x1,5	21,0	9,0	26,0	13,0	25,5	BCM-03	1000
M32x1,5	22,0	10,0	28,9	18,0	25,5	BCM-04	500
M40x1,5	28,3	11,0	36,0	27,0	27,5	BCM-05	500
M50x1,5	36,4	14,0	44,2	31,5	32,5	BCM-06	250
M63x1,5	46,2	14,0	54,1	40,5	39,8	BCM-07	250
M63x1,5	57,0	14,0	67,0	51,0	43,5	BCM-08	250

Thread Type **PG** acc. to DIN 40430

Outer Thread Size (Male)	For Conduit Nominal Size	Outer Thread Length TL mm	Outer Ø D mm	Inner Ø ID mm	Height h mm	Part Number	Minimum Order Quantity
						RAL 7035 light grey	
PG 7	12,8	8	17,4	7,0	21,2	BCF-01	3000
PG 9	15,0	8	20,0	10,0	21,3	BCF-02	2000
PG 11	19,0	8	24,0	13,5	24,5	BCF-03	2000
PG 13,5	21,0	9	25,9	14,5	25,3	BCF-04	1500
PG 16	22,0	10	28,9	16,0	25,5	BCF-05	750
PG 21	28,3	11	36,0	21,5	27,5	BCF-06	500
PG 29	36,4	11	44,2	31,5	32,4	BCF-07	500
PG 36	46,2	14	53,0	41,0	39,9	BCF-08	250
PG 48	57,0	14	67,8	51,0	43,3	BCF-09	10

Enclosure Couplers Polyamide

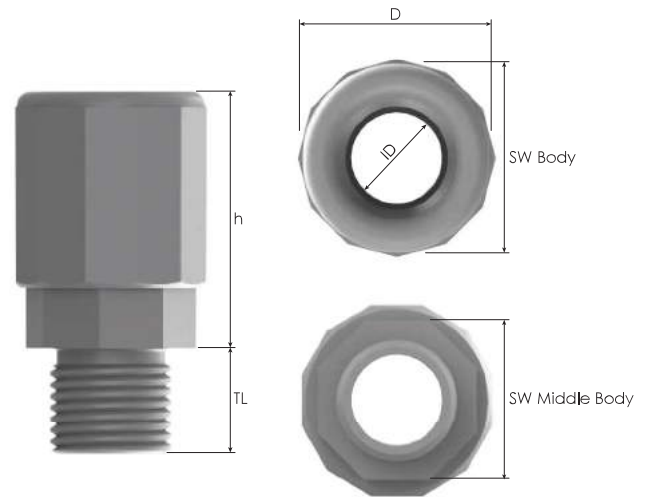


Enclosure Couplers

- Halogen free.
- No toxic fumes when involved in a fire.
- For conduit tubes.
- One side with standard metric threads and special fitting for conduit tubes on the other side.

Technical Details

Material	Fitting	Polyamide 6 Halogene free
	Seal	TPE Halogene free
Ingress Protection Rating		IP 67
Operating Temperature		Permanent -20 °C to +80 °C
Thread Type		Metric, according to EN 60423 and EN 62444
Accessories		• Lock nuts
Remarks		• We recommend the use of lock nuts to ensure IP rating for rough surfaces or through holes. • Accessories must be ordered separately.



Thread Type **METRIC** acc. to EN 60423

Outer Thread Size (Male)	For Conduit Nominal Size	Outer Thread Length	Spanner Width		Outer Ø	Inner Ø	Height	Part Number	Minimum Order Quantity
			Body	Middle Body					
		TL mm	SW Body mm	SW Middle Body mm	D mm	ID mm	H mm	RAL 7035 light grey	
M16x1,5	16,0	14,0	26	21	26,3	16,5	34,5	BRCF-01	1500
M20x1,5	20,0	14,0	30	25	31,1	20,5	33,6	BRCF-02	1000
M25x1,5	25,0	14,0	35	30	35,7	25,1	34,7	BRCF-03	750
M32x1,5	32,0	14,0	42	37	43,0	32,6	34,5	BRCF-04	500
M40x1,5	40,0	19,0	50	45	51,5	40,4	42,2	BRCF-05	350
M50x1,5	50,0	19,0	61	55	63,4	50,7	42,1	BRCF-06	200
M63x1,5	63,0	19,0	74	68	77,2	58,2	42,2	BRCF-07	150

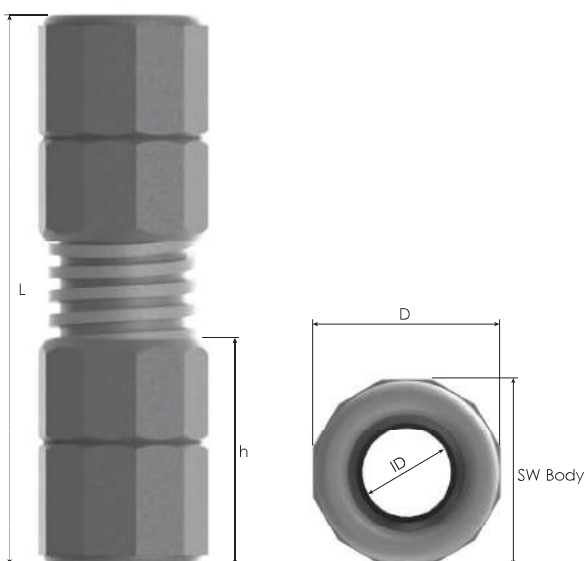
Flexible Fittings Polyamide

Flexible Fitting Set

- Halogen free.
- No toxic fumes when involved in a fire.
- For conduit tubes.
- For all kind of curves in electrical installations.
- Combination of two conduit unions with a flexible conduit.

Technical Details

Material	Fitting	Polyamide 6 Halogene free
	Seal	TPE Halogene free
Ingress Protection Rating		IP 67
Operating Temperature		Permanent -20 °C to +80 °C
Remarks		<ul style="list-style-type: none"> • It is the combination of two conduit unions with a suitable flexible conduit. • It may be used for all kind of curves in the electrical installation. • This set can be easily fitted with the right conduits.



Flexible Fitting Set

Size	For Conduit Nominal Size	Spanner Width Body	Outer Ø	Inner Ø	Height	Total Length	Part Number	Minimum Order Quantity
		SW Body mm	D mm	ID mm	h mm	L mm	RAL 7035 light grey	
M16	16,0	26	26,4	16,5	49,0	210	BRC90F-01	400
M20	20,0	30	31,3	20,4	47,7	240	BRC90F-02	250
M25	25,0	35	36,0	25,3	49,0	290	BRC90F-03	160
M32	32,0	42	43,4	32,2	48,7	400	BRC90F-04	70
M40	40,0	50	52,0	40,5	61,5	420	BRC90F-05	50
M50	50,0	62	63,3	50,5	61,5	440	BRC90F-06	30

Straight Couplers Polyamide

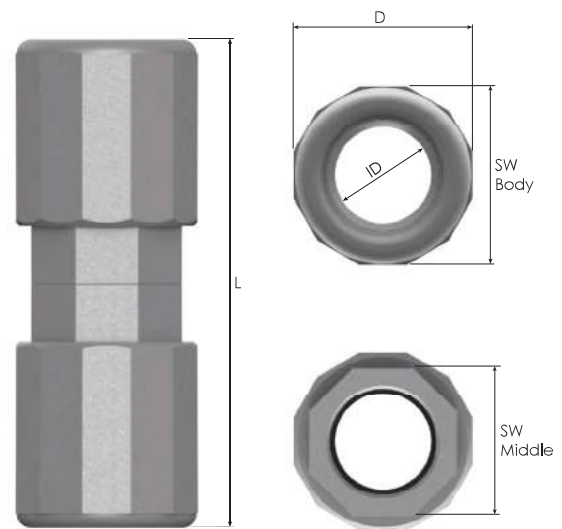


Straight Coupling

- Halogen free.
- No toxic fumes when involved in a fire.
- For connecting two conduit tubes.

Technical Details

Material	Fitting	Polyamide 6 Halogene free
	Seal	TPE Halogene free
Ingress Protection Rating		IP 67
Operating Temperature		Permanent -20 °C to +80 °C



Straight Couplers

Size	For Conduit Nominal Size	Spanner Width		Outer Ø	Inner Ø	Height	Part Number	Minimum Order Quantity
		Body	Middle					
		SW Body mm	SW Middle mm	D mm	ID mm	L mm	RAL 7035 light grey	
M16	16,0	26	21	26,3	16,3	68,8	BRCC-01	1000
M20	20,0	30	25	31,4	20,3	67,3	BRCC-02	650
M25	25,0	35	30	36,0	25,3	69,0	BRCC-03	600
M32	32,0	42	37	43,5	32,2	69,5	BRCC-04	400
M40	40,0	50	45	52,0	40,4	85,0	BRCC-05	250
M50	50,0	62	55	63,3	50,0	84,5	BRCC-06	150

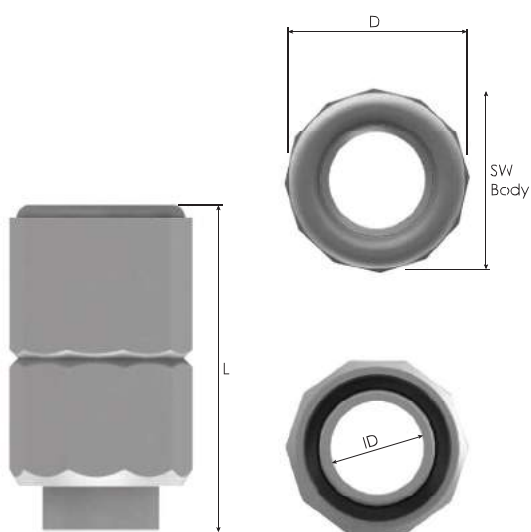
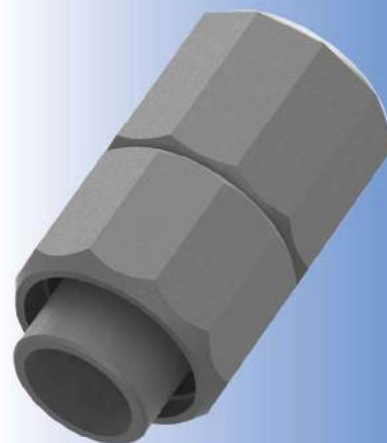
Conduit Union Polyamide

Conduit Union

- Halogen free.
- No toxic fumes when involved in a fire.
- For connecting flexible conduits with conduit tubes.

Technical Details

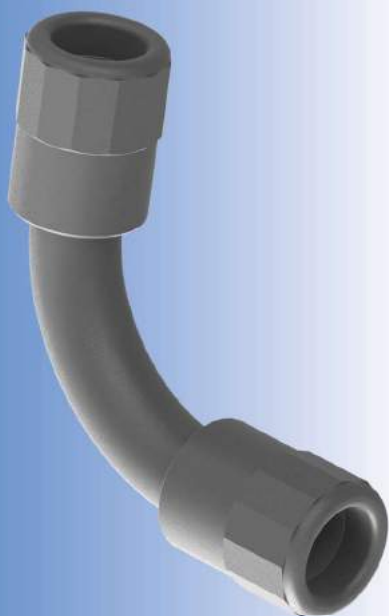
Material	Fitting	Polyamide 6 Halogene free
	Seal	TPE Halogene free
Ingress Protection Rating		IP 67
Operating Temperature		Permanent -20 °C to +80 °C



Conduit Union

Size	For Conduit Nominal Size	Spanner Width Body	Outer Ø	Inner Ø	Total Length	Part Number	Minimum Order Quantity
		SW Body mm	D mm	ID mm	L mm	RAL 7035 light grey	
M16	16,0	26	26,4	12,0	49,0	BRCM-01	1500
M20	20,0	30	31,0	16,0	47,7	BRCM-02	1000
M25	25,0	35	36,0	20,5	49,0	BRCM-03	750
M32	32,0	42	43,4	26,0	48,7	BRCM-04	500
M40	40,0	50	52,0	33,5	61,5	BRCM-05	300
M50	50,0	62	63,3	44,0	61,5	BRCM-06	200

Bend Couplers Polyamide

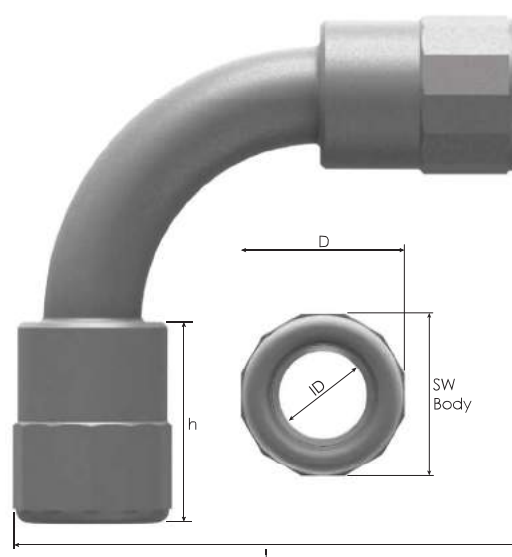


Bend Couplers

- Halogen free.
- No toxic fumes when involved in a fire.
- For connecting two conduit tubes by a 90° tube.

Technical Details

Material	Fitting	Polyamide 6 Halogene free
	Seal	TPE V0 Halogene free
Ingress Protection Rating	IP 67	
Operating Temperature	Permanent	
	-20 °C to +80 °C	



Bend Coupling

Size	For Conduit Nominal Size	Spanner Width Body SW Body mm	Outer Ø D mm	Inner Ø ID mm	Height h mm	Total Length L mm	Part Number		Minimum Order Quantity
							RAL 7035 light grey		
M16	16,0	26	26,4	16,4	32,8	78,0	BRC90R-01		600
M20	20,0	30	31,0	20,4	32,5	90,0	BRC90R-02		400
M25	25,0	35	36,0	25,4	32,5	107,0	BRC90R-03		250
M32	32,0	42	43,3	32,0	32,8	114,0	BRC90R-04		160
M40	40,0	50	52,0	40,2	32,8	138,0	BRC90R-05		90

Straight Liquid Tight Conduit Fittings Male, Brass

Liquid Tight Conduit Fittings Straight (Male), Brass

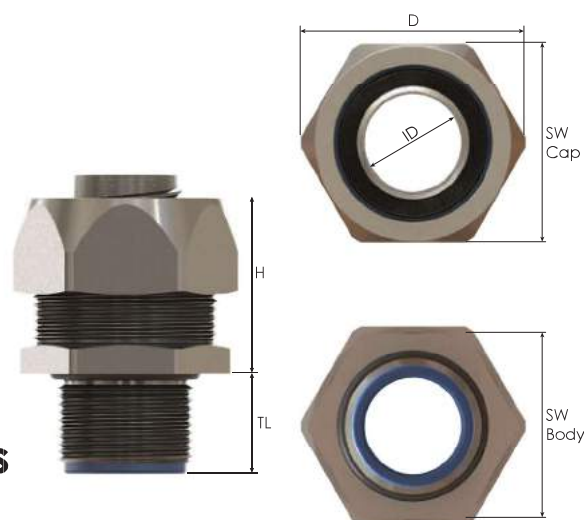
- Fittings for Sealite conduits.
- For metal machines and housings.
- For standard industrial applications in harsh environments.
- Great corrosion protection.
- Easy assembly.
- High quality strain relief and sealing, reliable performance for standard industrial applications.

Technical Details

Material	Body, Cap	Brass Nickel plated			
	Ferrule	Brass Nickel plated or Steel zinc plated			
	Prot.Bushing	Polyamide 6 V2	Metric	PG	NPT
	Seal Ring	Polyamide 6 V2			
	O-Ring	NBR			
Ingress Protection Rating	IP 65				
	IP 66				
Operating Temperature	Permanent				
	-45 °C to +105 °C				
Cable Type	Non armoured				
Thread Type	• Metric EN 60423				
	• PG DIN 40430				
	• NPT ANSI B1.20.1				
Accessories	• Lock nuts				
Remarks	• Also available in Stainless Steel				
	• O-ring available in Metric and PG threads.				
	• Accessories must be ordered separately.				



Straight Liquid Tight Conduit Fittings Male, Brass



Thread Type acc. to EN 60423

Outer Thread Size (Male)	For Sealite Nominal Size	Outer Thread Length	Spanner Width		Outer Ø	Inner Ø	max. Height	Part Number	Minimum Order Quantity
		TL mm	SW Cap mm	SW Body mm					
M12x1,5	1/4"	10,0	22	20	24,5	5,2	23,0	BBFM-01	500
M16x1,5	5/16"	11,5	26	24	29,0	8,3	25,5	BBFM-02(S)	500
	3/8"	11,5	26	24	29,0	10,2	25,5	BBFM-02	500
M20x1,5	3/8"	13,0	26	24	29,0	10,2	25,5	BBFM-03(S)	400
	1/2"	13,0	29	27	32,7	13,5	26,5	BBFM-03	400
M25x1,5	3/4"	15,0	35	33	39,0	18,5	27,0	BBFM-04	200
M32x1,5	1"	15,0	45	43	50,0	23,5	34,0	BBFM-05	100
M40x1,5	1 1/4"	16,0	54	52	60,0	31,8	38,5	BBFM-06	60
M50x1,5	1 1/2"	18,0	63	60	69,3	36,8	40,5	BBFM-07	40
M63x1,5	2"	20,0	77	74	85,0	47,8	47,0	BBFM-08	28

Thread Type PG acc. to DIN 40430

Outer Thread Size (Male)	For Sealite Nominal Size	Outer Thread Length	Spanner Width		Outer Ø	Inner Ø	max. Height	Part Number	Minimum Order Quantity
		TL mm	SW Cap mm	SW Body mm					
PG 7	1/4"	10,0	22	20	24,5	5,2	23,0	BBFB-01	500
PG 9	1/4"	10,0	22	20	24,5	5,2	23,0	BBFB-02	500
	5/16"	10,0	22	20	24,5	8,3	22,5	BBFB-02(A)	500
	5/16"	11,5	26	24	29,0	8,3	22,5	BBFB-02(B)	500
	3/8"	11,5	26	24	29,0	10,2	25,5	BBFB-02(C)	500
PG 11	3/8"	11,5	26	24	29,0	10,2	25,5	BBFB-03	500
PG 13,5	3/8"	11,5	26	24	29,0	10,2	25,5	BBFB-04	500
PG 16	1/2"	13,0	29	27	32,7	13,5	26,0	BBFB-05	400
PG 21	3/4"	15,0	35	33	39,0	18,5	26,5	BBFB-06	200
PG 29	1"	15,0	45	43	50,0	23,5	34,0	BBFB-07	100
PG 36	1 1/4"	16,0	54	52	60,0	31,8	38,0	BBFB-08	60
PG 42	1 1/2"	18,0	63	60	69,3	36,8	41,0	BBFB-09	40
PG 48	2"	20,0	77	74	85,0	47,8	46,5	BBFB-10	28

Thread Type NPT acc. to ANSI B1.20.1

Outer Thread Size (Male)	For Sealite Nominal Size	Outer Thread Length	Spanner Width		Outer Ø	Inner Ø	max. Height	Part Number	Minimum Order Quantity
		TL mm	SW Cap mm	SW Body mm					
NPT 1/4"	1/4"	10,0	22	20	24,5	5,2	23,0	BBFN-05	500
NPT 3/8"	1/4"	10,0	22	20	24,5	10,2	23,0	BBFN-01(S)	500
	3/8"	11,5	26	24	29,0	10,2	25,5	BBFN-01	500
NPT 1/2"	3/8"	13,0	26	24	29,0	10,2	25,5	BBFN-02(S)	400
	1/2"	13,0	29	27	32,7	13,5	26,0	BBFN-02	400
NPT 3/4"	3/4"	15,0	35	33	39,0	18,5	27,0	BBFN-03	200
NPT 1"	1"	15,0	45	43	50,0	23,5	33,5	BBFN-04	100
NPT 1 1/4"	1 1/4"	16,0	54	52	60,0	31,8	37,5	BBFN-05	60
NPT 1 1/2"	1 1/2"	18,0	63	60	69,3	36,8	40,5	BBFN-06	40
NPT 2"	2"	20,0	77	74	85,0	47,8	47,5	BBFN-07	28

45° Liquid Tight Conduit Fittings Male, Brass

45° Liquid Tight Conduit Fittings , Brass

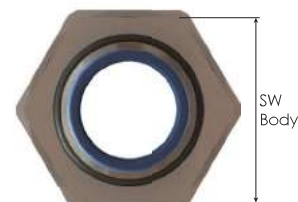
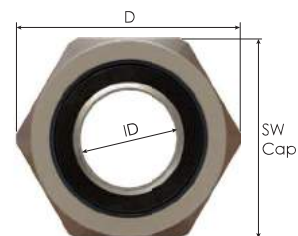
- Fittings for Sealite conduits.
- For metal machines and housings.
- For standard industrial applications in harsh environments.
- Great corrosion protection.
- Easy assembly.
- High quality strain relief and sealing, reliable performance for standard industrial applications.

Technical Details

Material	Body, Cap	Brass Nickel plated			
	Ferrule	Brass nickel plated or Steel zinc plated			
	Prot.Bushing	Polyamide 6 V2	Metric	PG	NPT
	Seal Ring	Polyamide 6 V2			
	O-Ring	NBR			
Ingress Protection Rating	IP 65				
	IP 66				
Operating Temperature	Permanent				
	-45 °C to +105 °C				
Cable Type	Non armoured				
Thread Type	• Metric EN 60423				
	• PG DIN 40430				
	• NPT ANSI B1.20.1				
Accessories	• Lock nuts				
Remarks	• Also available in Stainless Steel				
	• O-ring available in Metric and PG threads.				
	• Accessories must be ordered separately.				



45° Liquid Tight Conduit Fittings Male, Brass



Thread Type **METRIC** acc. to EN 60423

Outer Thread Size (Male)	For Sealrite Nominal Size	Outer Thread Length	Spanner Width		Outer Ø	Inner Ø	Part Number	Minimum Order Quantity
			Cap	Body				
		TL mm	SW Cap mm	SW Body mm	D mm	ID mm		
M16x1,5	5/16"	11,5	26	22	29,0	8,3	BBFM-02(S) 45	200
	3/8"	11,5	26	22	29,0	10,2	BBFM-02 45	200
M20x1,5	3/8"	13,0	26	22	29,0	10,2	BBFM-03(S) 45	200
	1/2"	13,0	29	27	32,7	13,5	BBFM-03 45	200
M25x1,5	3/4"	15,0	35	33	39,0	18,5	BBFM-04 45	100
M32x1,5	1"	15,0	45	42	50,0	23,5	BBFM-05 45	70
M40x1,5	1 1/4"	16,0	54	51	60,0	31,8	BBFM-06 45	50
M50x1,5	1 1/2"	18,0	63	60	69,3	36,8	BBFM-07 45	24
M63x1,5	2"	20,0	77	74	85,0	47,8	BBFM-08 45	16

Thread Type **PG** acc. to DIN 40430

Outer Thread Size (Male)	For Sealrite Nominal Size	Outer Thread Length	Spanner Width		Outer Ø	Inner Ø	Part Number	Minimum Order Quantity
			Cap	Body				
		TL mm	SW Cap mm	SW Body mm	D mm	ID mm		
PG 11	5/16"	11,5	26	22	29,0	8,3	BBFB-03(S) 45	200
	3/8"	11,5	26	22	29,0	10,2	BBFB-03 45	200
PG 13,5	3/8"	11,5	26	22	29,0	10,2	BBFB-04 45	200
PG 16	1/2"	13,0	29	27	32,7	13,5	BBFB-05 45	200
PG 21	3/4"	15,0	35	33	39,0	18,5	BBFB-06 45	100
PG 29	1"	15,0	45	42	50,0	23,5	BBFB-07 45	70
PG 36	1 1/4"	16,0	54	51	60,0	31,8	BBFB-08 45	50
PG 42	1 1/2"	18,0	63	60	69,3	36,8	BBFB-09 45	24
PG 48	2"	20,0	77	74	85,0	47,8	BBFB-10 45	16

Thread Type **NPT** acc. to ANSI B1.20.1

Outer Thread Size (Male)	For Sealrite Nominal Size	Outer Thread Length	Spanner Width		Outer Ø	Inner Ø	Part Number	Minimum Order Quantity
			Cap	Body				
		TL mm	SW Cap mm	SW Body mm	D mm	ID mm		
NPT 1/2"	3/8"	13,0	26	22	29,0	10,2	BBFN-02(S) 45	200
	1/2"	13,0	29	27	32,7	13,5	BBFN-02 45	200
NPT 3/4"	3/4"	15,0	35	33	39,0	18,5	BBFN-03 45	100
NPT 1"	1"	15,0	45	42	50,0	23,5	BBFN-04 45	70
NPT 1 1/4"	1 1/4"	16,0	54	51	60,0	31,8	BBFN-05 45	50
NPT 1 1/2"	1 1/2"	18,0	63	60	69,3	36,8	BBFN-06 45	24
NPT 2"	2"	20,0	77	74	85,0	47,8	BBFN-07 45	16

90° Liquid Tight Conduit Fittings Male, Brass

90° Liquid Tight Conduit Fittings, Brass

- Fittings for Sealtite conduits.
- For metal machines and housings.
- For standard industrial applications in harsh environments.
- Great corrosion protection.
- Easy assembly.
- High quality strain relief and sealing, reliable performance for standard industrial applications.

Technical Details

Material	Body, Cap	Brass Nickel plated			
	Ferrule	Brass Nickel plated or Steel Zinc plated			
	Prof.Bushing	Polyamide 6 V2	Metric	PG	NPT
	Seal Ring	Polyamide 6 V2			
Ingress Protection Rating	O-Ring	NBR			
		IP 65 IP 66			
Operating Temperature		Permanent			
		-45 °C to +105 °C			
Cable Type		Non armoured			
Thread Type		<ul style="list-style-type: none"> • Metric EN 60423 • PG DIN 40430 • NPT ANSI B1.20.1 			
	Accessories	<ul style="list-style-type: none"> • Lock nuts 			
	Remarks	<ul style="list-style-type: none"> • Also available in Stainless Steel • O-ring only available in Metric and PG threads. • Accessories must be ordered separately. 			



90° Liquid Tight Conduit Fittings Male, Brass



Thread Type **METRIC** acc. to EN 60423

Outer Thread Size (Male)	For Sealrite Nominal Size	Outer Thread Length	Spanner Width		Outer Ø	Inner Ø	Part Number	Minimum Order Quantity
		TL mm	SW Cap mm	SW Body mm				
M16x1,5	5/16"	11,5	26	22	29,0	8,3	BBFM-02(S) 90	200
	3/8"	11,5	26	22	29,0	10,2	BBFM-02 90	200
M20x1,5	3/8"	13,0	26	22	29,0	10,2	BBFM-03(S) 90	200
	1/2"	13,0	29	27	32,7	13,5	BBFM-03 90	200
M25x1,5	3/4"	15,0	35	33	39,0	18,5	BBFM-04 90	100
M32x1,5	1"	15,0	45	42	50,0	23,5	BBFM-05 90	70
M40x1,5	1 1/4"	16,0	54	51	60,0	31,8	BBFM-06 90	50
M50x1,5	1 1/2"	18,0	63	60	69,3	36,8	BBFM-07 90	24
M63x1,5	2"	20,0	77	74	85,0	47,8	BBFM-08 90	16

Thread Type **PG** acc. to DIN 40430

Outer Thread Size (Male)	For Sealrite Nominal Size	Outer Thread Length	Spanner Width		Outer Ø	Inner Ø	Part Number	Minimum Order Quantity
		TL mm	SW Cap mm	SW Body mm				
PG 11	5/16"	11,5	26	22	29,0	8,3	BBFB-03(S) 90	200
	3/8"	11,5	26	22	29,0	10,2	BBFB-03 90	200
PG 13,5	3/8"	11,5	26	22	29,0	10,2	BBFB-04 90	200
PG 16	1/2"	13,0	29	27	32,7	13,5	BBFB-05 90	200
PG 21	3/4"	15,0	35	33	39,0	18,5	BBFB-06 90	100
PG 29	1"	15,0	45	42	50,0	23,5	BBFB-07 90	70
PG 36	1 1/4"	16,0	54	51	60,0	31,8	BBFB-08 90	50
PG 42	1 1/2"	18,0	63	60	69,3	36,8	BBFB-09 90	24
PG 48	2"	20,0	77	74	85,0	47,8	BBFB-10 90	16

Thread Type **NPT** acc. to ANSI B1.20.1

Outer Thread Size (Male)	For Sealrite Nominal Size	Outer Thread Length	Spanner Width		Outer Ø	Inner Ø	Part Number	Minimum Order Quantity
		TL mm	SW Cap mm	SW Body mm				
NPT 1/2"	3/8"	13,0	26	22	29,0	10,2	BBFN-02(S) 90	200
	1/2"	13,0	29	27	32,7	13,5	BBFN-02 90	200
NPT 3/4"	3/4"	15,0	35	33	39,0	18,5	BBFN-03 90	100
NPT 1"	1"	15,0	45	42	50,0	23,5	BBFN-04 90	70
NPT 1 1/4"	1 1/4"	16,0	54	51	60,0	31,8	BBFN-05 90	50
NPT 1 1/2"	1 1/2"	18,0	63	60	69,3	36,8	BBFN-06 90	24
NPT 2"	2"	20,0	77	74	85,0	47,8	BBFN-07 90	16

Straight Liquid Tight Conduit Fittings Female, Brass

Straight Liquid Tight Conduit Fittings, Female, Brass

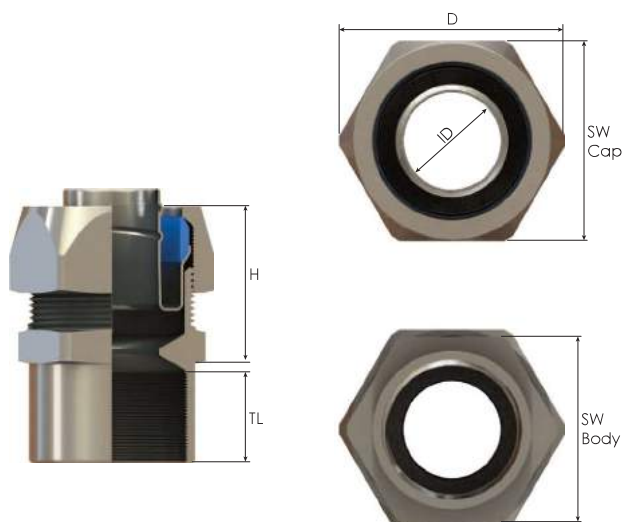
- Fittings for Sealite conduits.
- For metal machines and housings.
- For standard industrial applications in harsh environments.
- Great corrosion protection.
- Easy assembly.
- High quality strain relief and sealing, reliable performance for standard industrial applications.

Technical Details

Material	Body, Cap	Brass Nickel plated
	Ferrule	Brass Nickel plated or Steel Zinc plated
	Seal Ring	Polyamide 6 V2
	O-Ring	NBR
Ingress Protection Rating		IP 65
		IP 66
Operating Temperature		Permanent
		-45 °C to +105 °C
Cable Type		Non armoured
Thread Type	• Metric EN 60423	
	• PG DIN 40430	
	• NPT ANSI B1.20.1	



Straight Liquid Tight Conduit Fittings Female, Brass



Thread Type **METRIC** acc. to EN 60423

Outer Thread Size (Female)	For Sealife Nominal Size	Inner Thread Length	Spanner Width		Outer Ø	Inner Ø	max.Height	Part Number	Minimum Order Quantity
		TL mm	SW Cap mm	SW Body mm					
M16x1,5	5/16"	11,5	26,0	24,0	29,0	8,3	25,5	BBFM-02(S) F	500
	3/8"	11,5	26,0	24,0	29,0	10,2	26,0	BBFM-02 F	500
M20x1,5	1/2"	13,0	29,0	27,0	32,7	13,5	26,0	BBFM-03 F	400
M25x1,5	3/4"	15,0	35,0	33,0	39,0	18,5	26,5	BBFM-04 F	200
M32x1,5	1"	15,0	45,0	43,0	50,0	23,5	34,0	BBFM-05 F	100
M40x1,5	1 1/4"	16,0	54,0	52,0	60,0	31,8	37,5	BBFM-06 F	60
M50x1,5	1 1/2"	18,0	63,0	60,0	69,3	36,8	41,0	BBFM-07 F	40
M63x1,5	2"	20,0	77,0	74,0	85,0	47,8	48,0	BBFM-08 F	28

Thread Type **PG** acc. to DIN 40430

Outer Thread Size (Female)	For Sealife Nominal Size	Inner Thread Length	Spanner Width		Outer Ø	Inner Ø	max.Height	Part Number	Minimum Order Quantity
		TL mm	SW Cap mm	SW Body mm					
PG 11	5/16"	11,5	26,0	24,0	29,0	8,3	25,5	BBFB-03(S) F	500
	3/8"	11,5	26,0	24,0	29,0	10,2	26,0	BBFB-03 F	500
PG 13,5	3/8"	11,5	26,0	24,0	29,0	10,2	26,0	BBFB-04 F	500
PG 16	1/2"	13,0	29,0	27,0	32,7	13,5	26,0	BBFB-05 F	400
PG 21	3/4"	15,0	35,0	33,0	39,0	18,5	26,5	BBFB-06 F	200
PG 29	1"	15,0	45,0	43,0	50,0	23,5	34,0	BBFB-07 F	100
PG 36	1 1/4"	16,0	54,0	52,0	60,0	31,8	38,0	BBFB-08 F	60
PG 42	1 1/2"	18,0	63,0	60,0	69,3	36,8	41,0	BBFB-09 F	40
PG 48	2"	20,0	77,0	74,0	85,0	47,8	48,0	BBFB-10 F	28

Thread Type **NPT** acc. to ANSI B1.20.1

Outer Thread Size (Female)	For Sealife Nominal Size	Inner Thread Length	Spanner Width		Outer Ø	Inner Ø	max.Height	Part Number	Minimum Order Quantity
		TL mm	SW Cap mm	SW Body mm					
NPT 1/2	3/8"	13,0	26,0	24,0	29,0	10,2	26,0	BBFN-02(S) F	400
	1/2"	13,0	29,0	27,0	32,7	13,5	26,0	BBFN-02 F	400
NPT 3/4	3/4"	15,0	35,0	33,0	39,0	18,5	26,5	BBFN-03 F	200
NPT 1	1"	15,0	45,0	43,0	50,0	23,5	34,0	BBFN-04 F	100
NPT 1 1/4	1 1/4"	16,0	54,0	52,0	60,0	31,8	37,5	BBFN-05 F	60
NPT 1 1/2	1 1/2"	18,0	63,0	60,0	69,3	36,8	41,0	BBFN-06 F	40
NPT 2	2"	20,0	77,0	74,0	85,0	47,8	48,0	BBFN-07 F	28

Straight Liquid Tight Cable Hose Fittings Male, Brass

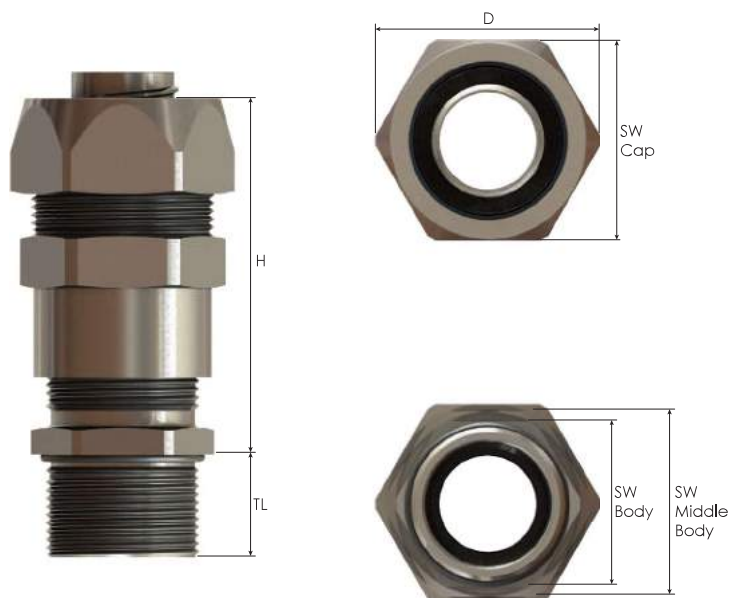
Liquid Tight Cable Hose Fittings (Male), Brass

- Conduit fittings with integrated cable gland – safe clamping and sealing of the cable.
- Fittings for Sealtite conduits.
- For metal machines and housings.
- For standard industrial applications in harsh environments.
- Great corrosion protection.
- Easy assembly.
- High quality strain relief and sealing, reliable performance for standard industrial applications.

Technical Details

Material	Body, Cap	Brass Nickel plated
	Clamping Insert	PA 6 (Polyamide 6)
	Seal	CR (Chloroprene)
	Ferrule	Brass Nickel plated or Steel Zinc plated
	Seal Ring	PA 6 (Polyamide 6)
Ingress Protection Rating	O-Ring	NBR
		IP 65 IP 66
Operating Temperature	Permanent	-20 °C to +100 °C
Cable Type		Non armoured
Thread Type		<ul style="list-style-type: none"> • Metric EN 60423 • PG DIN 40430
Accessories		<ul style="list-style-type: none"> • Lock nuts
Remarks		<ul style="list-style-type: none"> • O-ring available in Metric and PG threads. • Accessories must be ordered separately.





Straight Liquid Tight Cable Hose Fittings Male, Brass

Thread Type **METRIC** acc. to EN 60423

Outer Thread Size (Male)	For Sealrite Nominal Size	Clamping Range	Outer Thread Length	Cap	Spanner Width Middle Body	Body	Outer Ø	max. Height	Part Number	Minimum Order Quantity
		Ø min-max mm	TL mm	SW Cap mm	SW Middle Body mm	SW Body mm	D mm	H mm		
M16x1,5	5/16"	4,0 - 8,0	12,0	26	24	18	29,0	49,0	BBFM-02(S) CH	250
	3/8"	4,0 - 8,0	12,0	26	24	18	29,0	49,0	BBFM-02 CH	250
M20x1,5	3/8"	6,0 - 10,0	12,0	26	24	22	29,0	49,0	BBFM-03(S) CH	250
	1/2"	6,0 - 12,0	12,0	29	27	22	32,7	50,5	BBFM-03 CH	250
M25x1,5	3/4"	13,0 - 18,0	12,0	35	33	30	39,0	63,5	BBFM-04 CH	200
M32x1,5	1"	18,0 - 23,5	15,0	45	43	40	50,0	75,0	BBFM-05 CH	70
M40x1,5	1"	18,0 - 23,5	15,0	45	43	43	50,0	69,5	BBFM-06 CH	50

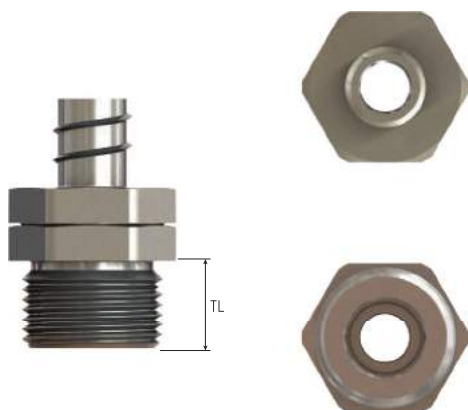
Thread Type **PG** acc. to DIN 40430

Outer Thread Size (Male)	For Sealrite Nominal Size	Clamping Range	Outer Thread Length	Cap	Spanner Width Middle Body	Body	Outer Ø	max. Height	Part Number	Minimum Order Quantity
		Ø min-max mm	TL mm	SW Cap mm	SW Middle Body mm	SW Body mm	D mm	H mm		
PG 9	5/16"	4,0 - 8,0	12,0	26,0	24,0	17,0	29,0	48,5	BBFB-02(S) CH	250
	3/8"	4,0 - 8,0	12,0	26,0	24,0	17,0	29,0	48,5	BBFB-02 CH	250
PG 11	3/8"	5,0 - 10,0	15,0	26,0	24,0	20,0	29,0	51,0	BBFB-03 CH	250
	3/8"	6,0 - 10,0	15,0	26,0	24,0	22,0	29,0	49,0	BBFB-04 CH	200
PG 13,5	1/2"	6,0 - 12,0	15,0	29,0	27,0	22,0	32,7	50,5	BBFB-04(S) CH	200
	1/2"	10,0 - 13,5	15,0	29,0	27,0	24,0	32,7	53,5	BBFB-05 CH	200
PG 21	3/4"	13,0 - 18,0	15,0	35,0	33,0	30,0	39,0	59,0	BBFB-06 CH	100
PG 29	1"	18,0 - 23,5	15,0	45,0	43,0	40,0	50,0	70,0	BBFB-07 CH	70

Straight Swivel Fittings Male

Technical Details

Material	Stainless Steel AISI 303
Thread Type	Metric acc. to EN 60423



Swivel Fittings

Outer Thread Size (Male)	For Seal/ite Nominal Size	Outer Thread Length TL mm	Outer Ø D mm	Part Number	Minimum Order Quantity
M12x1,5	1/4"	8,0	15,5	BMSSW-0S	1000
M16x1,5	1/4"	10,0	18,9	BMSSW-01	500



Rigid & Liquid Tight Conduit Fittings Applications

Machine Tools



Transformer Connections



Wet and Corrosive environments, including power generations, petrochemical, paper mills, food, beverage, pharmaceutical plants and anywhere high performance is required.

Console Wiring



Computer Power Distribution



Motor Applications



Oiltight, Liquidtight or Raintight box and enclosures



Air Conditioning and Heating



Outdoor Lighting



Flexibility and Protection against entry liquids, vapors or solids, such as machine tool building, robotic assembly

