



**aluEiN**<sup>®</sup>  
aluminium Die-cast Enclosure

Raychem RPG (P) Ltd incorporated in 1989 is a 50:50 joint venture company between TE Connectivity, USA (formerly Tyco Electronics) and RPG Enterprises, India.

We are an ISO 9001, ISO 14001 and OHSAS 18001 certified company having six state of art manufacturing facilities across various locations coupled with centralized R&D and Tool Design facility.

We have several ranges of products that cater to different industry vertical like Electrical Energy, Electronics & Telecom, Petroleum/Oil & Gas, Mining, Automation etc.



ISO 9001:2008



ISO 14001:2004



OHSAS 18001:2007

## Raychem RPG (P) Limited

### International Business Division

1/62, M.G. Road, Off Western Express Highway, Satalivi,  
Vasai (East), THANE - 401208, INDIA  
Tel: +91-250-3057627/637/682/562, Direct: +91-9769205861,  
Fax: +91-22-6646-6675, E-fax: +91-22-6646-6710,  
E-mail: apuranik@raychemrpg.com, Web: www.raychemrpg.com

**Soyter Components**  
ul Ekologiczna 14/16 05-080 Izabelin  
handlowy@soyter.pl  
tel 22 752 82 55

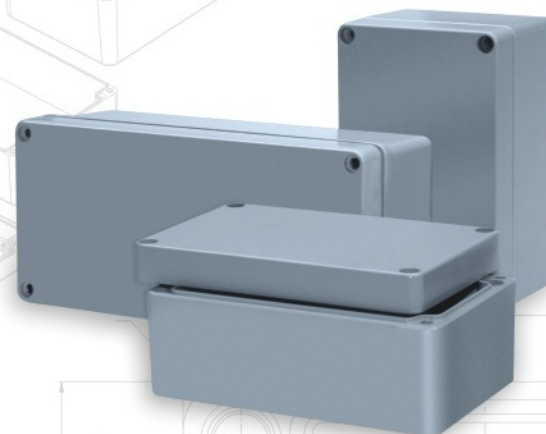
### Corporate & Head Office

Ceat Mahal Annexe, 463, Dr. Annie Besant Road, Mumbai 400 030, INDIA  
Tel: +91-22-2493-7485 / 6 / 7 Fax: +91-22-2493-8879



## Dystrybucja Soyter Components

**aluEiN**<sup>®</sup>  
aluminium Die-cast Enclosure



(A TE - Connectivity - RPG Enterprises JV)



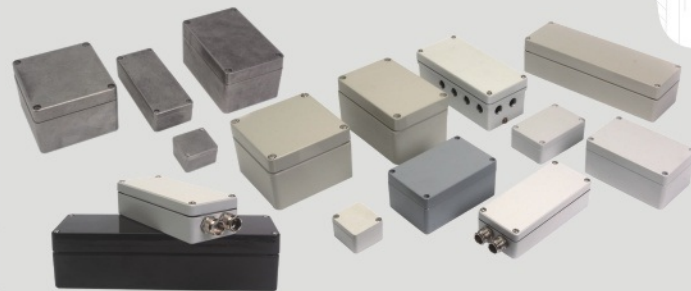
(A TE - Connectivity - RPG Enterprises JV)





## aluEIN<sup>®</sup>

aluminium Die-cast Enclosure



### Technical Data Sheet :

#### Die-cast Aluminium Enclosure

- Material: Al Si 12, as per DIN EN 1706
- Components: Fastening threads M4 / M6 in the enclosure bottom.
- Ingress protection: IP66 / IP67 / IP68 / 69K as per IEC60529
- Gasket: Neoprene gasket (-40°C to +100°C)
- Lid Screws: Stainless Steel 1.4301 (A2), captive

- Surface: Painted / Non-Painted
- Standard Color: RAL 7001, 7031, 7032, 7035, 7038, Black RAL 9004

#### Optionally available:

- External Mounting Bracket: Stainless Steel 1.4301 (A2)
- Mounting Plates: Sheet Steel, galvanized
- Gasket: Silicon gasket (-50°C to +135°C)
- Surface: Corrosion protection, special colors
- Certified: UL, IECEx, Ex

### Approvals

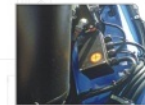


(A TE - Connectivity - RPG Enterprises JV)



## aluEIN<sup>®</sup>

aluminium Die-cast Enclosure



#### CRANE HOISTING

In modern cabins of Cranes of various types where reliability & durability are the key requirements which need higher IP rated Aluminium enclosures. These enclosures are integral parts of the control panels & displays with indicating lamps & push buttons.



#### LOAD CELLS

Load cells manufacturers & PCB mounting integrators & Panel system integrators use higher IP rated aluminium enclosures which become housing for electronic connections.



#### HIGH TORQUE BRAKES

Multi Pole - spring applied brakes are used in Passenger Lifts & escalators. Direct drives in modern Lift technology brakes with high braking torques, need IP protected aluminium enclosures.

#### SOLAR PANELS

Photovoltaic cells installation done by various contractors to preserve aesthetics by placing electrical junction boxes and combiner boxes under PV modules. Solar farms & roof top solar panel installation need higher IP rated Aluminium enclosures.



#### OIL METERS

Products such as Oil meters, electronic thermometers, intelligent cooling controls use Higher IP rated aluminium enclosures.



#### DISPLAY KEYPAD

Display with Keypad used in the automation industry for various machines is based on the Aluminium enclosures where IP protection is the key requirement along with durability.



### Quality Assurance:

- Raychem RPG has built necessary resources in terms of people and equipment and a above all, an organization, which guarantees efficient use of these resources.
- Various Machines for Measurements and Testing are available to ensure conformance to Quality Specifications.



### Environment, Health & Safety



#### Protecting Today to create a better tomorrow together

Raychem RPG is focused on reducing environmental footprints and improving performance. All the manufacturing sites of Raychem RPG are ISO 14001 and OHSAS 18001 Certified.



(A TE - Connectivity - RPG Enterprises JV)



### Customized Services:

#### Mechanical Processing

- Drilling
- Milling
- Tapping
- Profile Milling
- Laser Cutting
- All VMC Operations

#### Value Added Services

- Screen Printing
- Engraving
- Pad Printing
- Lacquering
- Painting
- Special Powder Coating
- Assembly with Cable Glands

We provide above services on the boxes as per specific requirements.



### Applications:



#### LOCOMOTIVES

In modern cabins of Locomotives where reliability & durability are the key requirements which need higher IP rated Aluminium enclosures. These enclosures are integral parts of the control panels & signal distribution system in locomotives.



#### PROCESS CONTROL

Application such as automated process controls, machine operation controls in power plants, in energy metering applications & food Processing industry, needs IP protected Aluminium enclosures.

#### MINING

Mining equipments such as Trucks, Lifters, Trolleys, Earthmovers need higher safety of connections against rough environments.



#### AUTOMATION

Automation designed for a variety of industrial applications such as lifting equipment and heating and ventilation (HVAC) applications.



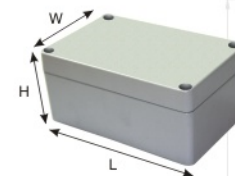
(A TE - Connectivity - RPG Enterprises JV)



### Dystrybucja – Soyter Components

#### Specification sheet with Accessories

	Y-> Yes			Standard Accessories						Certification					
Raychem Part No.	Sizes-Dimensions External			Mounting Plate	M6 External Brackets	External Hinges	Internal Hinge	DIN rail for terminals		Silicon Gasket	IP 66	IP 67	IP 68	Impact Test IK	EMC
	Length	Width	Height					TS15	TS35						
RJ01	50	45	30	-	-	-	-	-	-	Y	Y	-	-	IK 09	Y
RJ02	98	64	34	-	-	-	-	-	-	Y	Y	Y	Y	IK 09	Y
RJ03	150	64	34	-	-	-	-	-	-	Y	Y	Y	Y	IK 09	Y
RJ04	58	64	34	-	-	-	-	-	-	Y	Y	Y	Y	IK 09	Y
RJ05	75	80	57	Y	-	-	-	Y	-	Y	Y	Y	Y	IK 09	Y
RJ06	125	80	57	Y	-	-	-	Y	-	Y	Y	Y	Y	IK 09	Y
RJ07	175	80	57	Y	-	-	-	Y	-	Y	Y	Y	Y	IK 09	Y
RJ08	250	80	57	Y	-	-	-	Y	-	Y	Y	Y	Y	IK 09	Y
RJ09	100	100	81	Y	Y	Y	-	Y	-	Y	Y	Y	Y	IK 09	Y
RJ10	160	100	81	Y	Y	Y	-	Y	-	Y	Y	Y	Y	IK 09	Y
RJ25	200	100	80	Y	Y	Y	-	Y	-	Y	Y	Y	Y	IK 09	Y
RJ11	122	120	81	Y	Y	Y	-	Y	-	Y	Y	Y	Y	IK 09	Y
RJ21	220	120	81	Y	Y	Y	-	Y	-	Y	Y	Y	Y	IK 09	Y
RJ22	122	120	91	Y	Y	Y	-	Y	-	Y	Y	Y	Y	IK 09	Y
RJ12	220	120	90	Y	Y	Y	-	Y	-	Y	Y	Y	Y	IK 09	Y
RJ15	160	160	91	Y	Y	Y	Y	-	Y	Y	Y	Y	Y	IK 09	Y
RJ13	260	160	90	Y	Y	Y	Y	-	Y	Y	Y	Y	Y	IK 09	Y
RJ14	360	160	90	Y	Y	Y	Y	-	Y	Y	Y	Y	Y	IK 09	Y
RJ28	180	180	100	Y	Y	Y	Y	-	Y	Y	Y	Y	Y	IK 09	Y
RJ29	280	180	100	Y	Y	Y	Y	-	Y	Y	Y	Y	Y	IK 09	Y
RJ19	230	200	113	Y	Y	Y	Y	-	Y	Y	Y	Y	Y	IK 09	Y
RJ17	280	230	110	Y	Y	Y	Y	-	Y	Y	Y	Y	Y	IK 09	Y
RJ18	330	230	111	Y	Y	Y	Y	-	Y	Y	Y	Y	Y	IK 09	Y
RJ30	200	230	180	Y	Y	Y	Y	-	Y	Y	Y	Y	Y	IK 09	Y
RJ20	330	230	180	Y	Y	Y	Y	-	Y	Y	Y	Y	Y	IK 09	Y
RJ31	400	310	110	Y	Y	Y	Y	-	Y	Y	Y	-	-	IK 09	Y
RJ32	400	310	180	Y	Y	Y	-	-	Y	Y	Y	-	-	IK 09	Y
RJ33	600	310	110	Y	Y	Y	-	-	Y	Y	Y	-	-	IK 09	Y
RJ34	600	310	180	Y	Y	Y	-	-	Y	Y	Y	-	-	IK 09	Y
RJ35	400	230	110	Y	Y	Y	-	-	Y	Y	Y	-	-	IK 09	Y



#### Assembly of Accessories:

- Mounting Plates, Mounting Brackets, Internal Hinges, External Hinges.



(A TE - Connectivity - RPG Enterprises JV)

